

ANZ-Roy Morgan Australian Consumer Confidence Media Release

11 August 2020



This is not personal advice. It does not consider your objectives or circumstances. Please refer to the Important Notice.

Contributors

David Plank
Head of Australian Economics
+61 2 8037 0029
David.Plank@anz.com

Shaurya Mishra
Junior Economist
+91 80 6795 0463
Shaurya.Mishra@anz.com

Contact
research@anz.com

Follow us on Twitter
[@ANZ_Research](https://twitter.com/ANZ_Research)

Series available at **Bloomberg**
AU: ALLX AUANZ <GO>
NZ: ALLX NZANZ <GO>

Previous reports available to subscribers on [ANZ Live](#)

Consumer confidence falls as Stage 4 locks down Melbourne

- Consumer confidence declined 2.4% last week. This was its seventh weekly decline, longer than the six weeks of continuous decline seen during the first wave of the pandemic. The current decline has been less severe, however, as the index has fallen a bit more than 11% over these seven weeks compared to the 40% decline seen in the first wave.
- Financial conditions were mixed, with 'current finances' gaining 2.7% and 'future finances' declining 1.9%.
- Economic conditions were also mixed. 'Current economic conditions' plunged by 8.2%, its eighth weekly decline. This sub-index is now down by 30% over the past seven weeks compared to the fall of 60% in the first wave. 'Future economic conditions' ended on a positive note, gaining 2.2%.
- 'Time to buy a household item' declined 8.6%. 'Inflation expectations' was stable at 3.3% (four-week moving average).

ANZ-Roy Morgan Consumer Confidence and inflation expectations

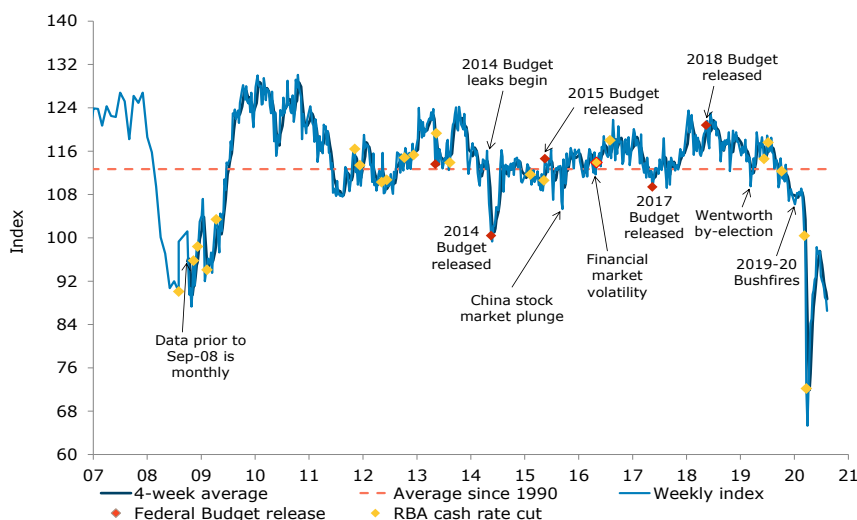
Last weekend (08-09 Aug)	Weekly change, %	Four-week average	Monthly average since 1990	Inflation expectations (four-week ma)
86.5	-2.4%	88.7	112.7	3.3%

This weekly ANZ-Roy Morgan Australian Consumer Confidence Rating is based on 1,530 interviews conducted online and over the telephone on the weekend. Not seasonally adjusted. Further data history on page 6.

ANZ Head of Australian Economics, David Plank, commented:

The move to Stage 4 restrictions in Melbourne put further downward pressure on sentiment last week, with confidence falling to its lowest level since the last weekend of April. Not surprisingly, confidence is weakest in Melbourne. The resilience of sentiment toward financial conditions continues to be a feature of the survey, but only in a relative sense as it is still low in absolute terms and speaks to a likely reluctance on the part of households to spend.

Confidence declined 2.4%

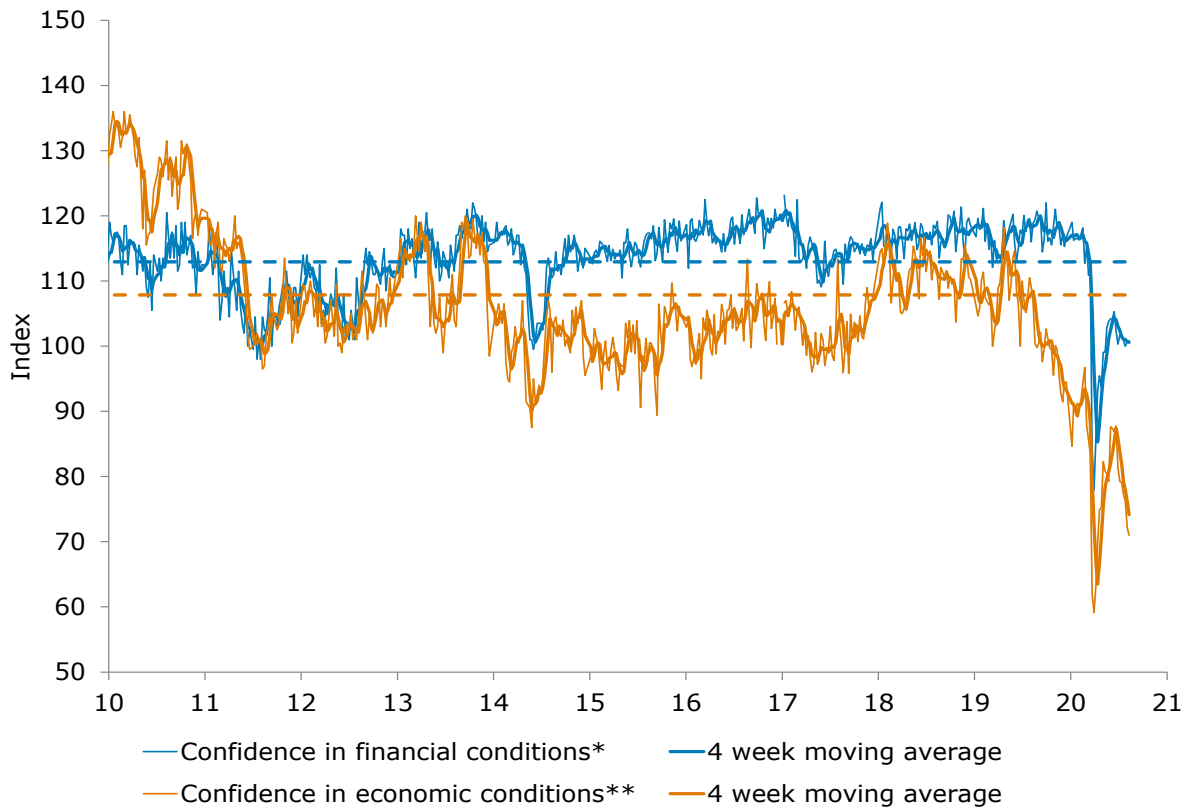


Source: ANZ-Roy Morgan, ANZ Research



Charts

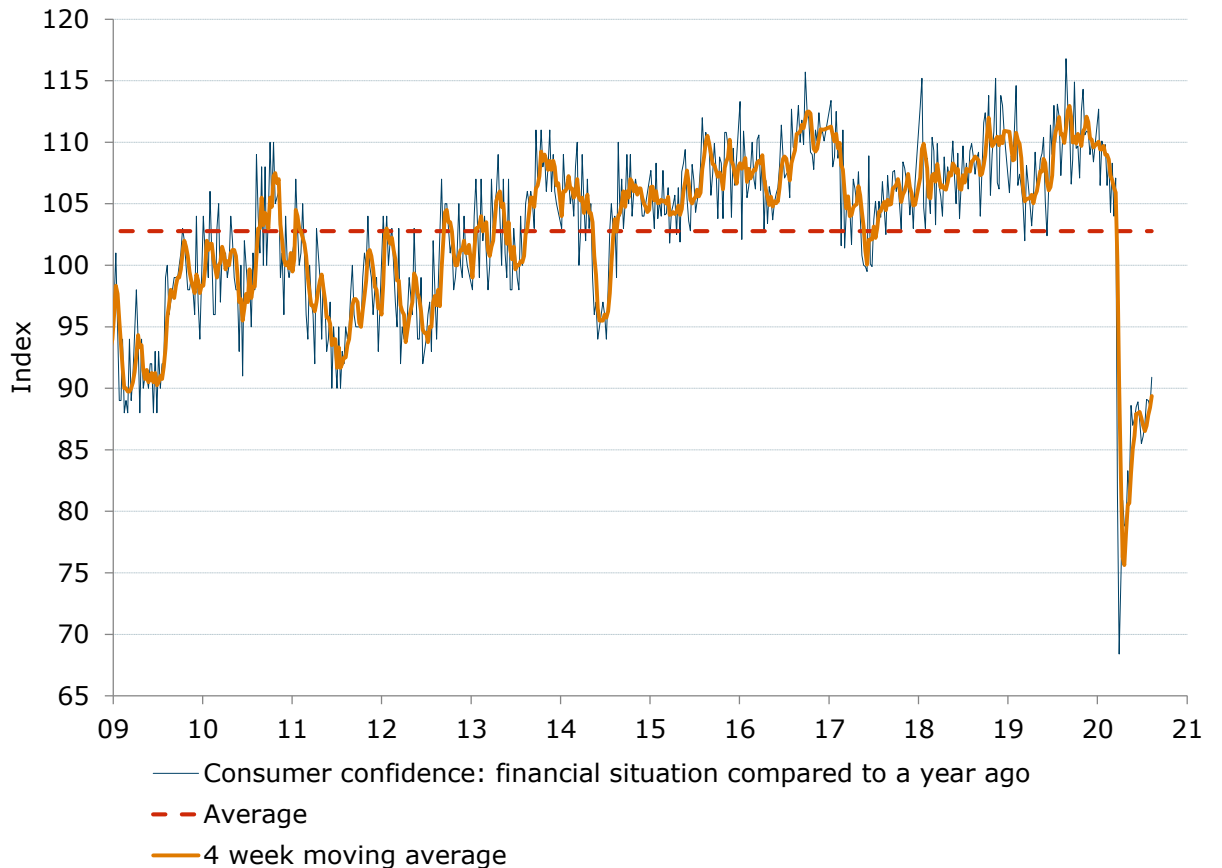
Figure 1. Economic conditions remain much weaker than financial



Source: ANZ-Roy Morgan

Note: *Financial conditions index is an average of 'financial situation compared to a year ago' and 'financial situation next year' sub-indices. **Economic conditions index is an average of 'economic conditions in 12 months' and 'economic conditions in five years' sub-indices.

Figure 2. 'Current financial conditions' gained 2.7%

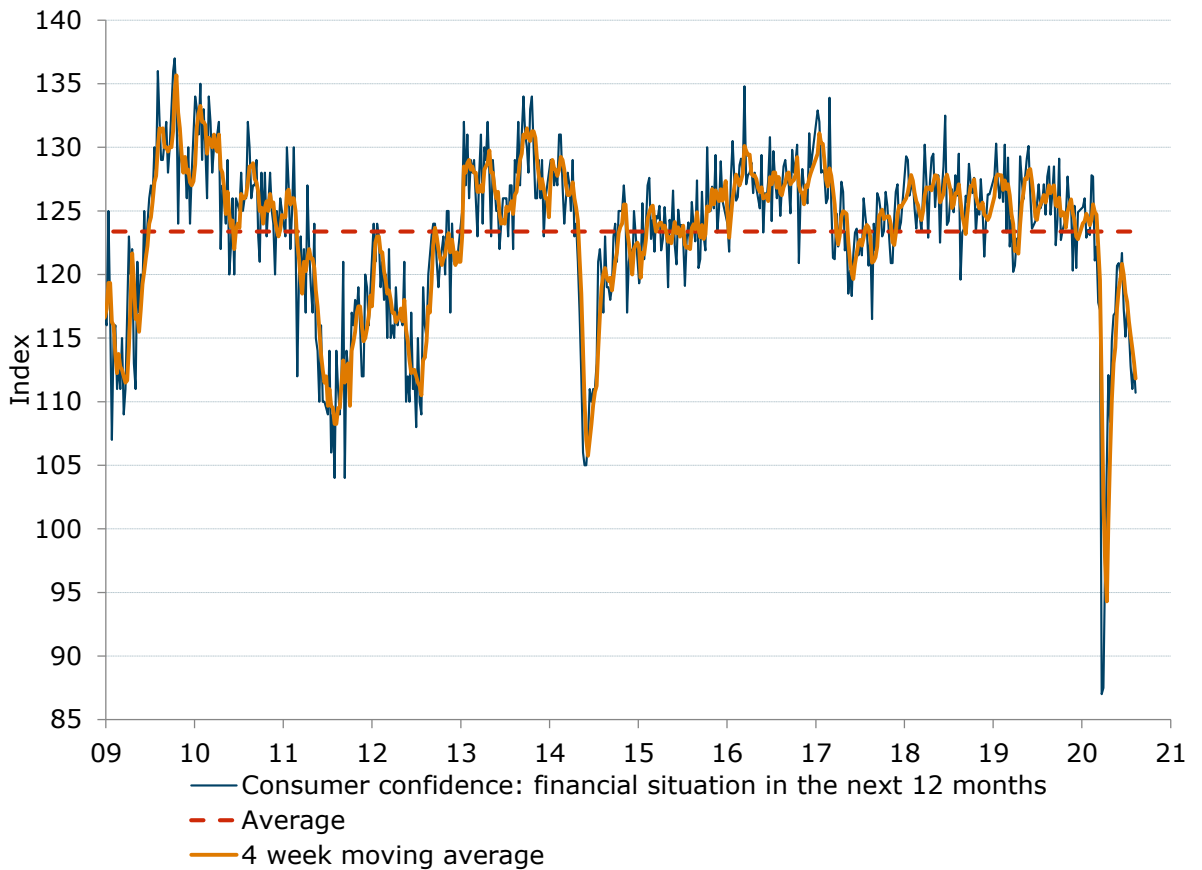


Source: ANZ-Roy Morgan



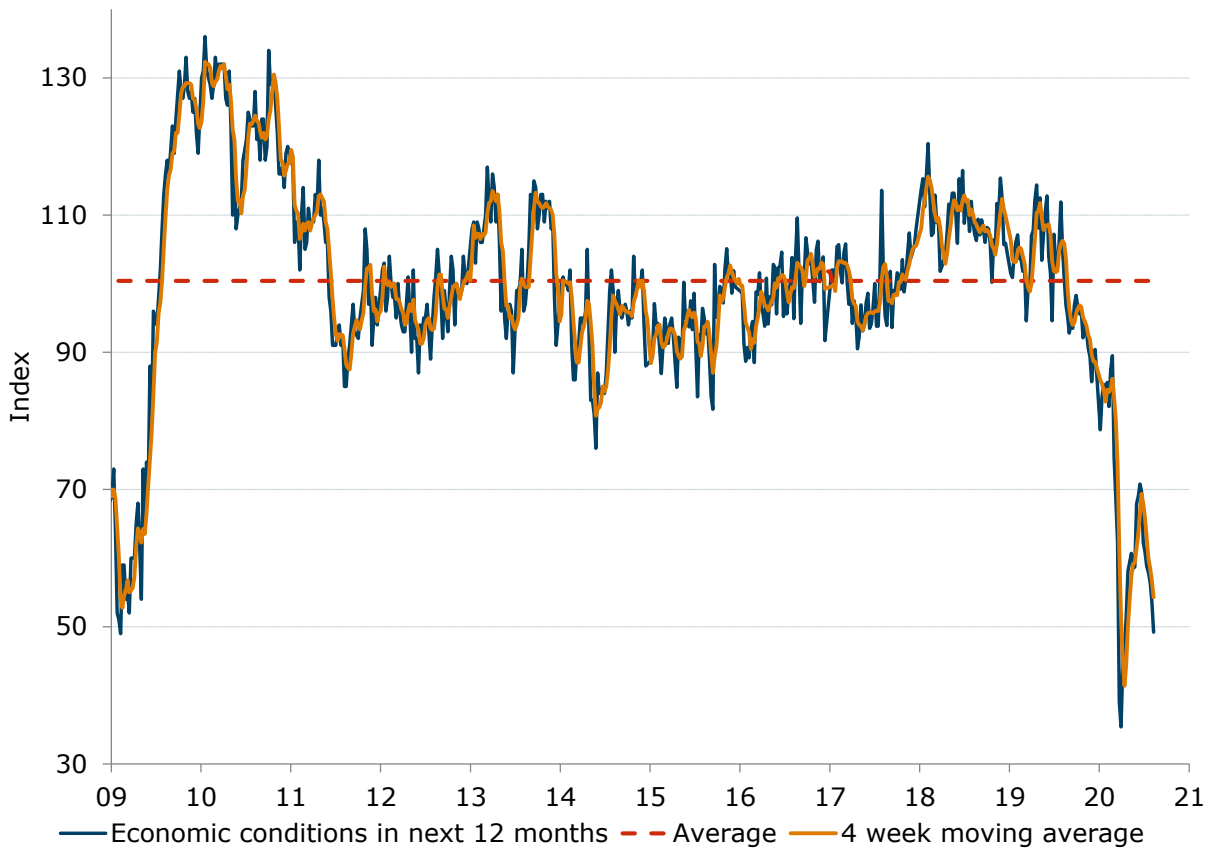
Charts

Figure 3. While 'Future financial conditions' declined 1.9%



Source: ANZ-Roy Morgan

Figure 4. 'Current economic conditions' plunged by 8.2%, its eighth weekly decline

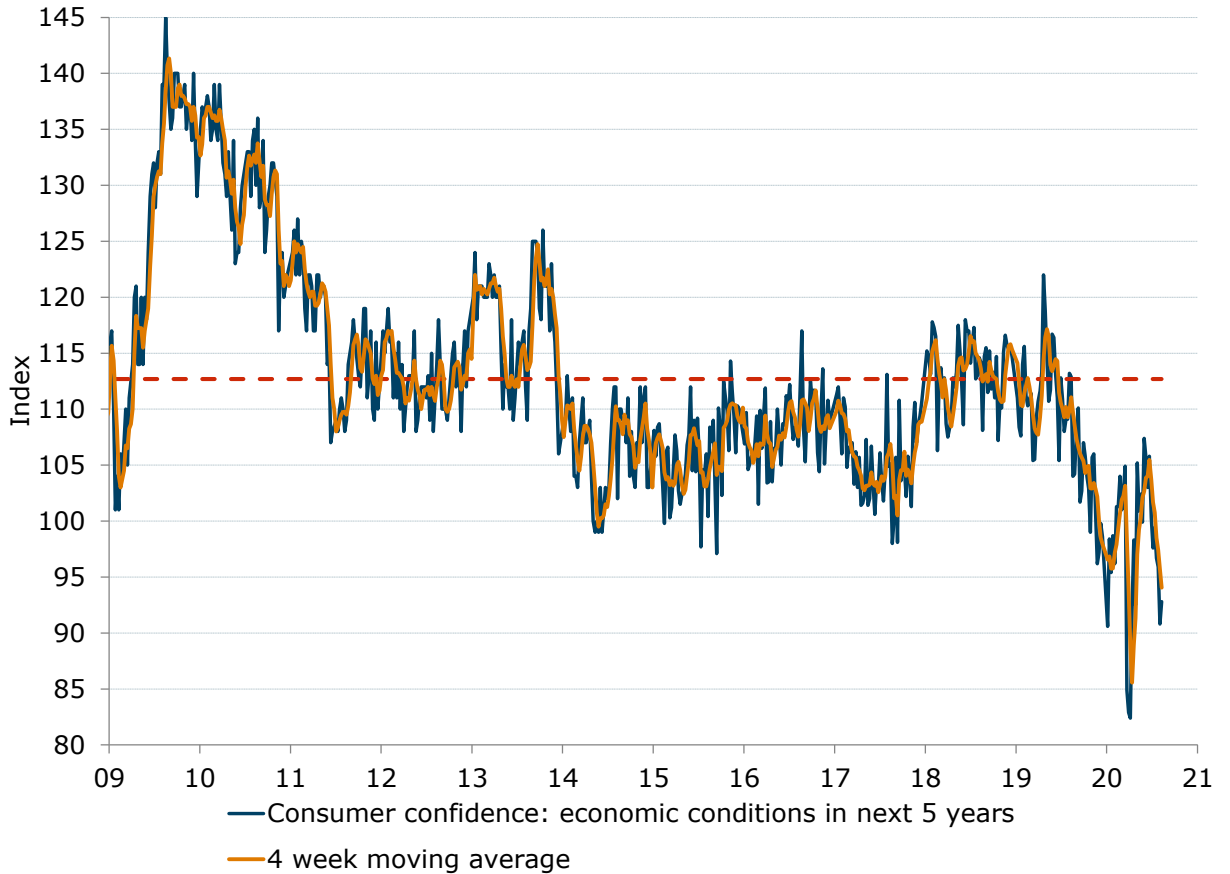


Source: ANZ-Roy Morgan



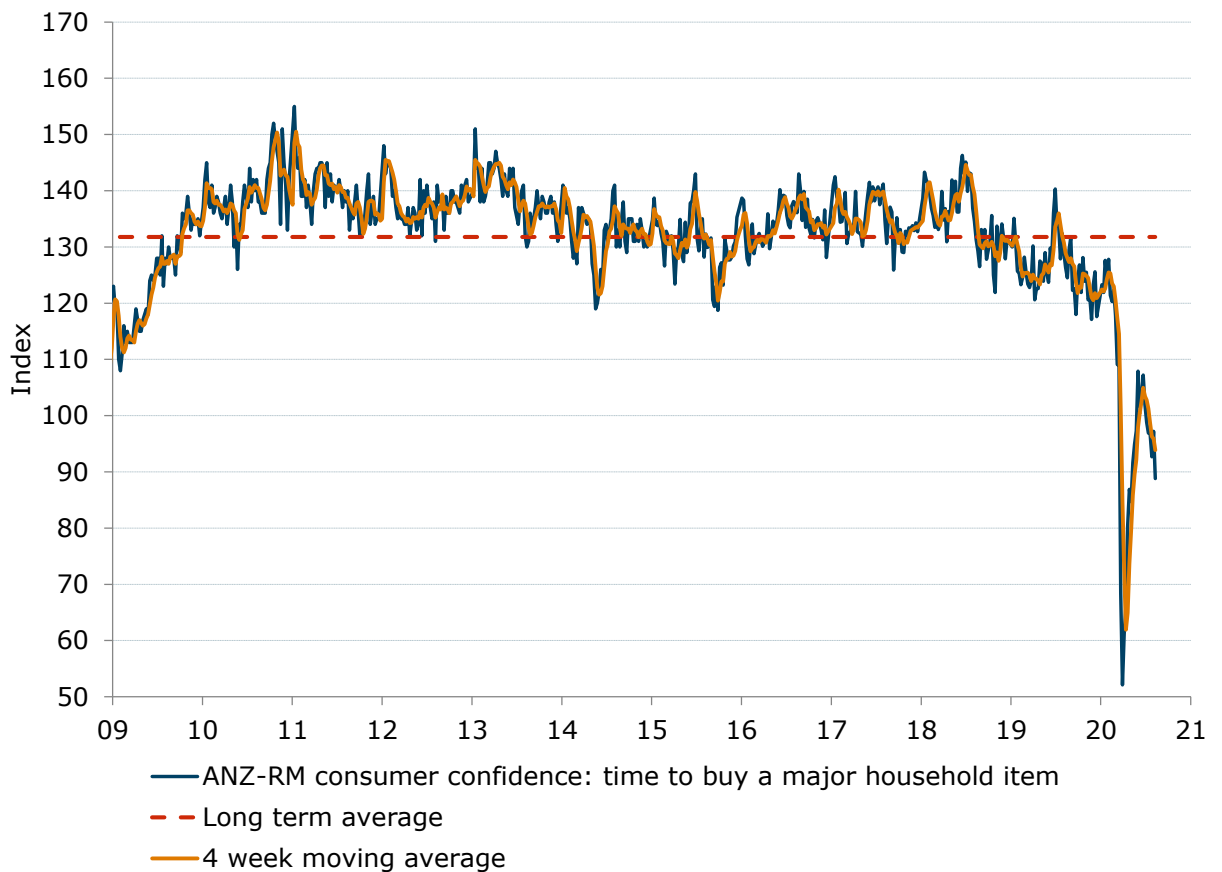
Charts

Figure 5. 'Future economic conditions' gained 2.2%, after three straight weekly declines



Source: ANZ-Roy Morgan

Figure 6. 'Time to buy a household item' plunged by 8.6%

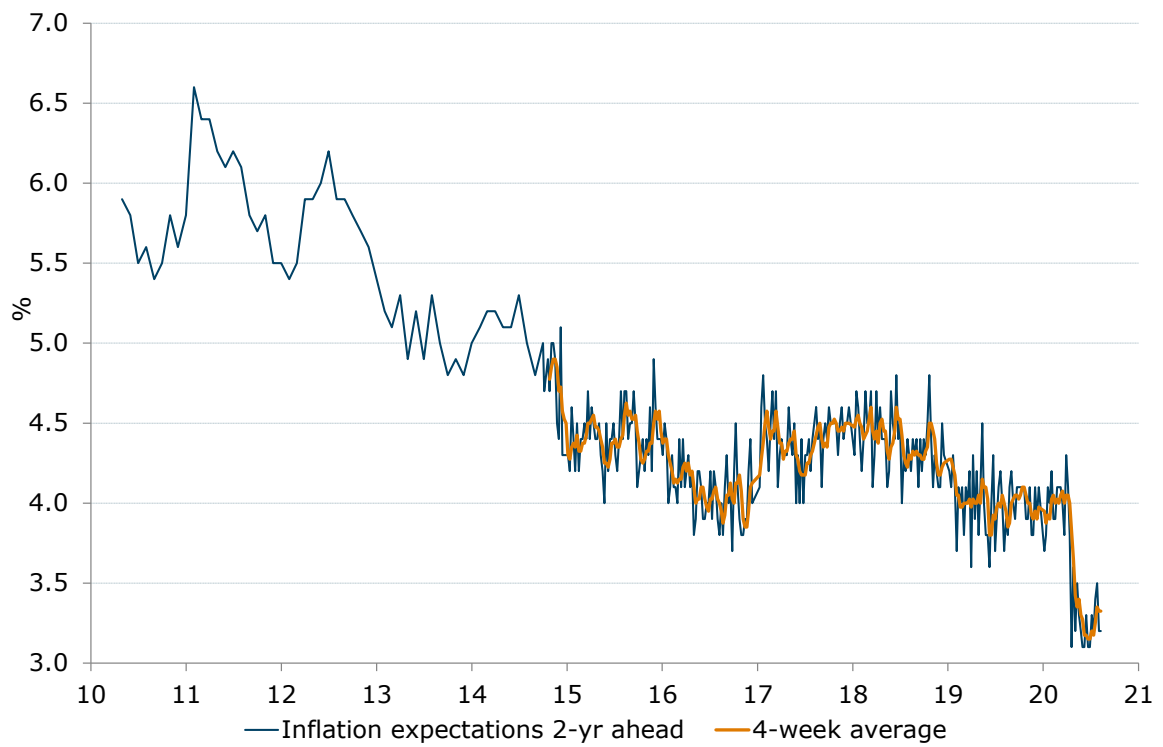


Source: ANZ-Roy Morgan



Charts

Figure 7. 'Inflation expectations' stable at 3.3% (four-week moving average)



* Data from Oct-2014 is weekly.
Data prior to that is monthly.

Source: ANZ-Roy Morgan



Data table

Table 1. ANZ-Roy Morgan Australian Consumer Confidence

	Headline index		Subindices				Inflation expectations	
	Last week	4-week moving average	1. Financial situation compared to a year ago	2. Financial situation next year	3. Economic conditions next year	4. Economic conditions next 5 years	5. Time to buy a major household item	6. Inflation expectations 2-year ahead (%)
Avg since 2001	115	-	103	124	104	113	133	-
2011 avg	114	-	97	117	101	116	140	6.0
2012 avg	113	-	99	118	97	113	138	5.8
2013 avg	119	-	104	128	106	118	139	5.0
2014 avg	111	-	104	121	94	106	132	4.9
2015 avg	112	-	107	124	94	106	131	4.4
2016 avg	115	-	109	127	99	108	134	4.1
04-Aug-19	115.8	116.6	107.3	124.7	105.1	113.2	128.9	3.7
11-Aug-19	115.5	116.5	110.1	127.7	100.6	112.9	126.3	3.9
18-Aug-19	112.8	115.7	110.3	128.5	96.8	104.0	124.5	3.8
25-Aug-19	114.1	114.6	116.8	124.7	95.4	104.2	129.5	4.1
01-Sep-19	114.4	114.2	113.0	126.3	92.8	108.2	131.7	4.2
08-Sep-19	113.3	113.7	111.7	128.5	94.1	110.1	122.3	4.0
15-Sep-19	109.3	112.8	106.6	122.3	93.5	101.7	122.6	3.9
22-Sep-19	110.1	111.8	108.6	124.3	96.9	102.7	118.0	4.1
29-Sep-19	114.7	111.9	114.9	129.1	98.3	107.0	124.3	4.1
06-Oct-19	112.3	111.6	109.5	122.7	96.6	105.8	126.8	4.1
13-Oct-19	110.9	112.0	109.7	123.5	95.6	104.0	121.9	4.1
20-Oct-19	111.6	112.4	107.1	124.0	95.9	102.9	128.1	4.1
27-Oct-19	110.4	111.3	112.5	124.5	92.1	99.0	123.9	3.9
03-Nov-19	113.5	111.6	114.3	127.7	94.5	105.7	125.5	3.9
10-Nov-19	111.1	111.7	110.6	125.6	93.0	106.0	120.6	4.1
17-Nov-19	109.9	111.2	110.9	125.8	90.6	100.8	121.1	3.8
24-Nov-19	106.8	110.3	110.8	120.3	89.4	96.2	117.1	3.8
01-Dec-19	108.1	109.0	109.0	125.4	85.7	97.2	123.3	4.1
08-Dec-19	109.0	108.5	110.1	120.5	89.0	99.8	125.6	3.9
15-Dec-19	108.0	108.0	108.4	124.9	90.4	98.6	117.6	4.1
05-Jan-20	106.2	107.8	112.7	125.3	78.7	90.6	123.3	3.7
12-Jan-20	107.3	107.6	106.5	126.0	83.5	98.4	121.9	3.8
19-Jan-20	108.3	107.5	110.1	122.9	85.3	95.4	127.6	4.1
26-Jan-20	108.0	107.5	109.5	123.5	83.8	98.7	124.5	4.0
02-Feb-20	108.5	108.0	109.8	123.1	85.6	96.2	127.8	4.2
09-Feb-20	107.8	108.2	106.5	127.8	82.1	101.3	121.4	3.9
16-Feb-20	109.1	108.4	108.6	127.7	87.4	101.3	120.3	3.9
23-Feb-20	108.3	108.4	104.3	121.1	89.5	104.0	122.4	4.1
01-Mar-20	104.8	107.5	108.3	122.2	74.6	101.0	117.8	4.1
08-Mar-20	100.4	105.7	104.0	117.8	68.6	102.7	109.1	4.1
15-Mar-20	100.0	103.4	107.1	117.2	62.2	104.9	108.9	4.0
22-Mar-20	72.2	94.4	81.5	87.0	39.1	84.9	68.4	3.8
29-Mar-20	65.3	84.5	68.4	87.5	35.4	82.9	52.1	4.3
05-Apr-20	71.9	77.4	74.4	97.5	44.1	82.4	61.2	4.1
12-Apr-20	78.2	71.9	80.9	105.2	46.9	92.1	66.1	3.8
19-Apr-20	84.2	74.9	78.8	112.1	51.4	98.3	80.3	3.1
26-Apr-20	85.0	79.8	79.1	108.4	58.1	92.5	86.9	3.6
03-May-20	89.5	84.2	83.3	114.8	59.4	105.2	84.7	3.2
10-May-20	90.3	87.3	81.4	116.8	60.7	100.9	91.6	3.5
17-May-20	92.3	89.3	88.6	117.0	58.5	102.4	94.9	3.3
24-May-20	92.7	91.2	87.0	120.7	58.7	99.9	97.3	3.2
31-May-20	98.3	93.4	87.5	120.9	67.9	107.4	107.9	3.1
07-Jun-20	97.0	95.1	88.5	120.0	69.0	105.7	101.7	3.1
14-Jun-20	97.5	96.4	88.9	121.7	70.8	103.0	103.0	3.3
21-Jun-20	97.5	97.6	87.4	117.3	69.7	105.8	107.2	3.1
28-Jun-20	93.0	96.3	85.5	115.1	62.3	100.3	102.0	3.1
05-Jul-20	92.1	95.0	86.1	117.3	60.9	97.6	98.8	3.3
12-Jul-20	91.6	93.6	87.1	115.7	58.8	99.4	96.9	3.2
19-Jul-20	90.7	91.9	89.1	112.8	57.9	96.7	96.8	3.4
26-Jul-20	89.0	90.9	89.0	111.0	56.5	95.9	92.7	3.5
02-Aug-20	88.6	90.0	88.5	112.8	53.6	90.8	97.2	3.2
09-Aug-20	86.5	88.7	90.9	110.7	49.2	92.8	88.8	3.2

Source: ANZ-Roy Morgan



Important notice

[4 April 2019]

This publication is published by Australia and New Zealand Banking Group Limited ABN 11 005 357 522 ("ANZBGL") in Australia. This publication is intended as thought-leadership material. It is not published with the intention of providing any direct or indirect recommendations relating to any financial product, asset class or trading strategy.

The information in this publication is not intended to influence any person to make a decision in relation to a financial product or class of financial products. It is general in nature and does not take account of the circumstances of any individual or class of individuals. Nothing in this publication constitutes a recommendation, solicitation or offer by ANZBGL or its branches or subsidiaries (collectively "ANZ") to you to acquire a product or service, or an offer by ANZ to provide you with other products or services. All information contained in this publication is based on information available at the time of publication. While this publication has been prepared in good faith, no representation, warranty, assurance or undertaking is or will be made, and no responsibility or liability is or will be accepted by ANZ in relation to the accuracy or completeness of this publication or the use of information contained in this publication. ANZ does not provide any financial, investment, legal or taxation advice in connection with this publication.